

Electronic Floor Mounted Throttle Pedal 965 000 series



1. Mechanical Specifications:

- Two “built-in” return springs
- Polyamide (injection molded) PA66 + 30% Glass Fiber
- Long or short treadle plate
- Interchangeable with 962000 series or wide base
- Complies with FMVSS 124

Travel angle	22°
Angle option	30°, 35°, 45°
Protection classification	IP66
Storage temperature	-40°C to +95°C
Operating temperature	-40°C to +85°C
Connector	AMP - 6 pins - waterproof (IP69)

- Options:
 - Magnetic kick down virtual feedback with optional kick down signal
 - Swivel arm
 - Connector kit or customized wire harness
- Technical specification sheet and part numbers are available upon request

2. Electrical Specifications:

- Complies with 72/245/EEC
- E1 number 03 5754

All Electronic Throttle Controls are fitted with programmable Hall Effect Sensors.

The signals generated by the Electronic Throttle Controls will allow a smooth and precise engine speed control.

The output values are programmable and hence can be adapted to the customer’s specifications. Electronic Throttle Controls can be connected directly to the engine management system, or engine Electronic Control Module.

For available programmable sensor models, please refer to pages 3 and 4.

A/ Programmable single analogue sensor with programmable electronic Idle Validation Switch (IVS)

Analogue channel :

Current consumption	< 7,5mA
Supply (Vs)	Between 5V and 28 V DC
Output signal value	Between 5% and 95% (+/- 1%) of 5V DC
Output current	Max 1mA

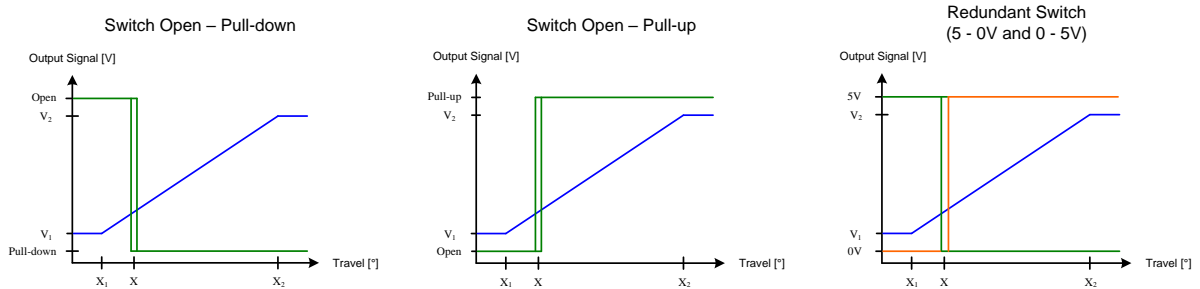
Switch channel option 1 :

Current consumption	< 10mA
Supply (Vs)	Between 8V and 36V DC
Idle Validation Switch	Configurable (Open collector, Pull-up or Pull-down)
Output current	Max 10mA

Switch channel option 2 :

Current consumption	< 10mA
Supply (Vs)	Between 8V and 36V DC
Redundant Idle Validation Switch (2 outputs)	Output 1 : High - Low (5 - 0V) Output 2 : Low - High (0 - 5V)
Output current	Max 1mA / output

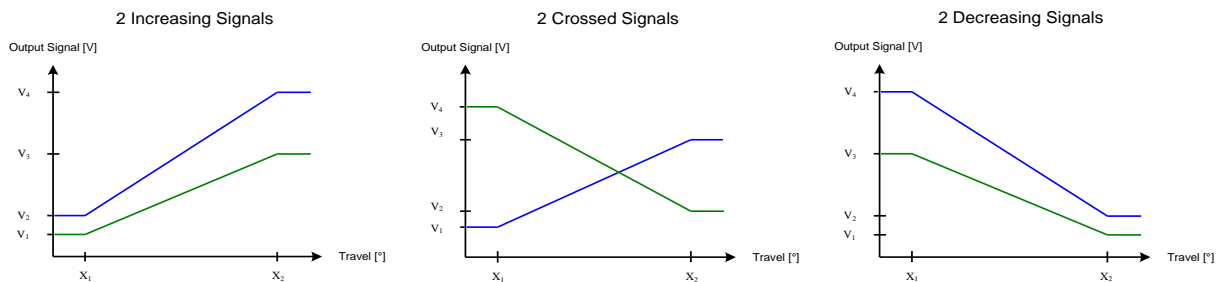
Examples:



B/ Programmable single or dual output analogue sensor

Current consumption	< 8mA / channel
Supply (Vs)	5V DC / channel
Output channel #1	Between 5% and 95% (+/- 1%) of Vs
Output channel #2	Between 5% and 95% (+/- 1%) of Vs
Output current	Max 1mA / channel

Examples:



C/ Programmable single or dual output digital sensor (PWM)

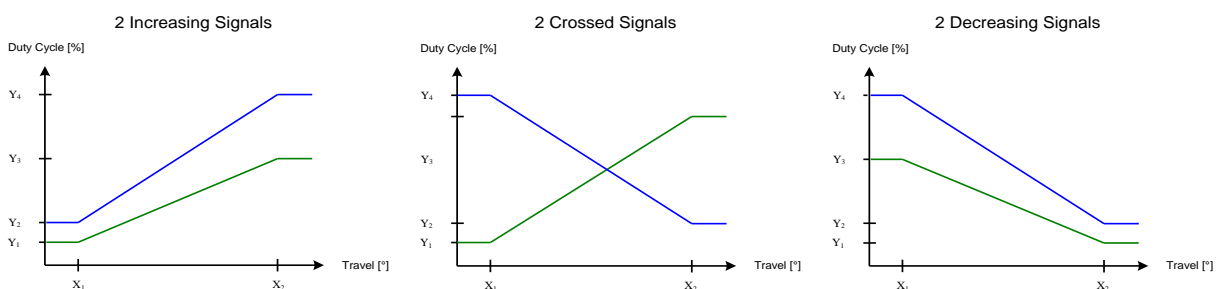
Digital channel(s) :

Current consumption	< 12mA / channel
Supply (Vs)	Between 8 and 36 V DC
Output channel #1	Duty cycle between 5% and 95% (+/- 1%)
Output channel #2	Duty cycle between 5% and 95% (+/- 1%)
Frequency	200Hz to 500Hz +/-15%
Output current	Max 10mA / channel

Optional Switch channel with single digital output :

Current consumption	< 12mA
Supply (Vs)	Between 8V and 36V DC
Idle Validation Switch	Configurable (Open collector, Pull-up or Pull-down)
Output current	Max 10mA

Examples:



3. Options:

A/ CAN J1939

J1939 Parameters:

- J1939 Messages and signals can be activated according to MCS Throttle default values or customer specifications.
- J1939 Parameters like SA (Source Address) or NAME fields can be set according to MCS Throttle default values or customer specifications.
- Optional messages such as DTC (DMx, FMI, MIL, ...) can be activated upon customer request.

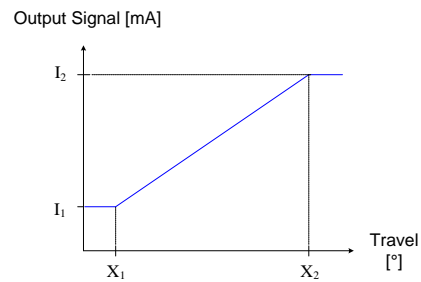
Electrical specifications:

Power Supply	+8 .. 32VDC
Current consumption	40mA max.
J1939 Connector	Deutsch #DT06-3S (J1939/11)



B/ 4-20mA current output signals

Power Supply	+8 .. 32VDC
Current output signal	4 - 20mA



C/ Customized parts available



With swivel arm



With the wide base

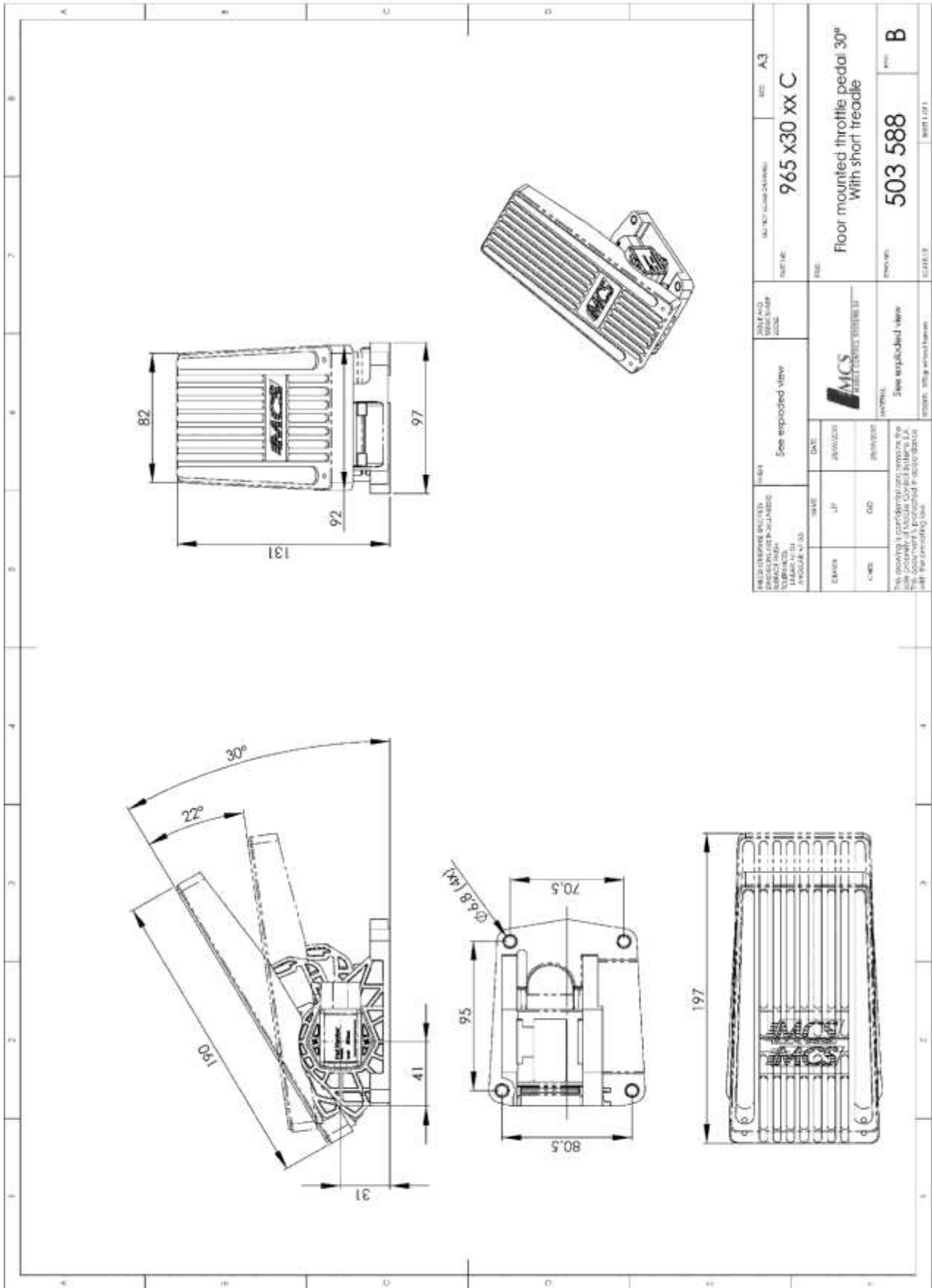


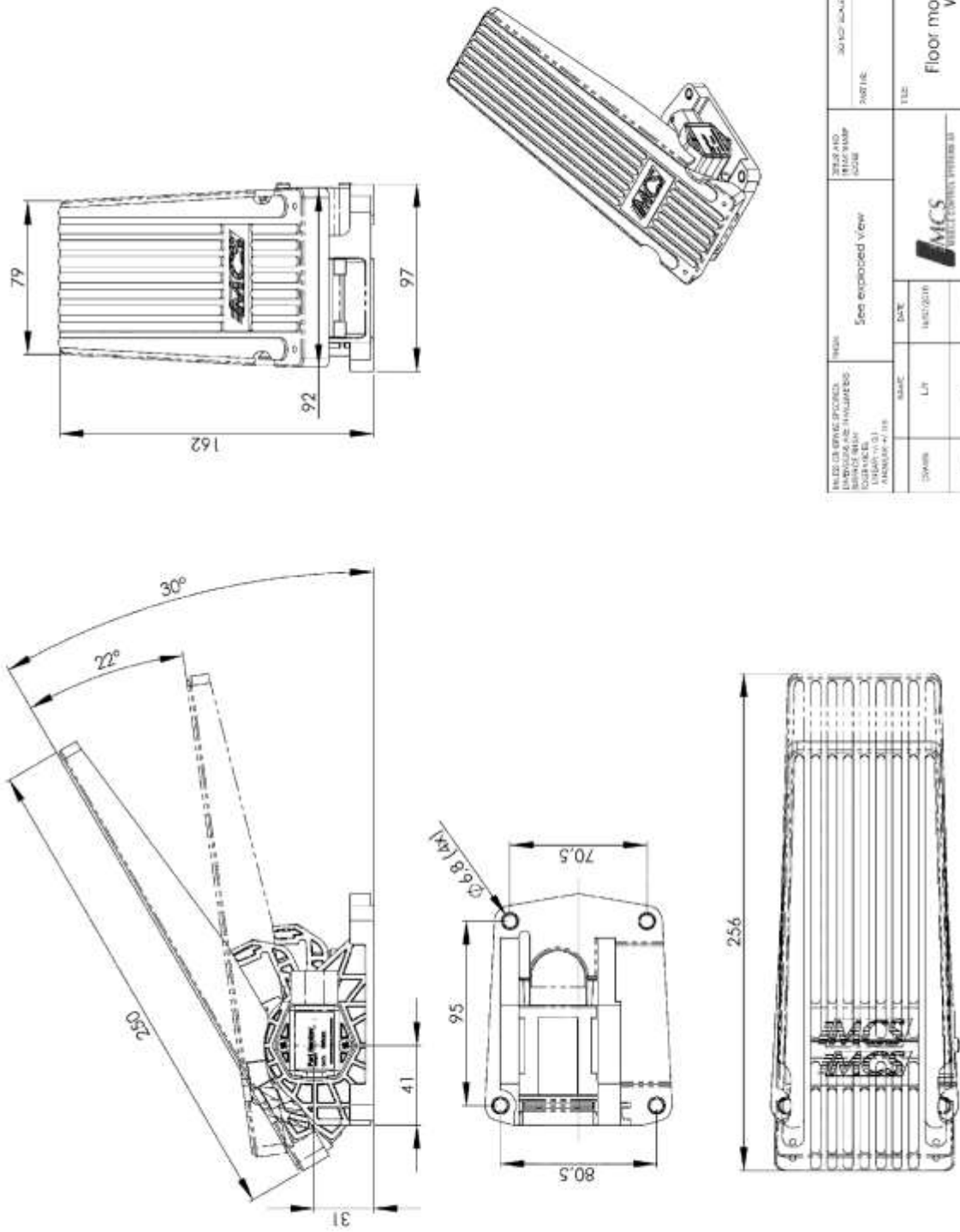
Different treadle plates available



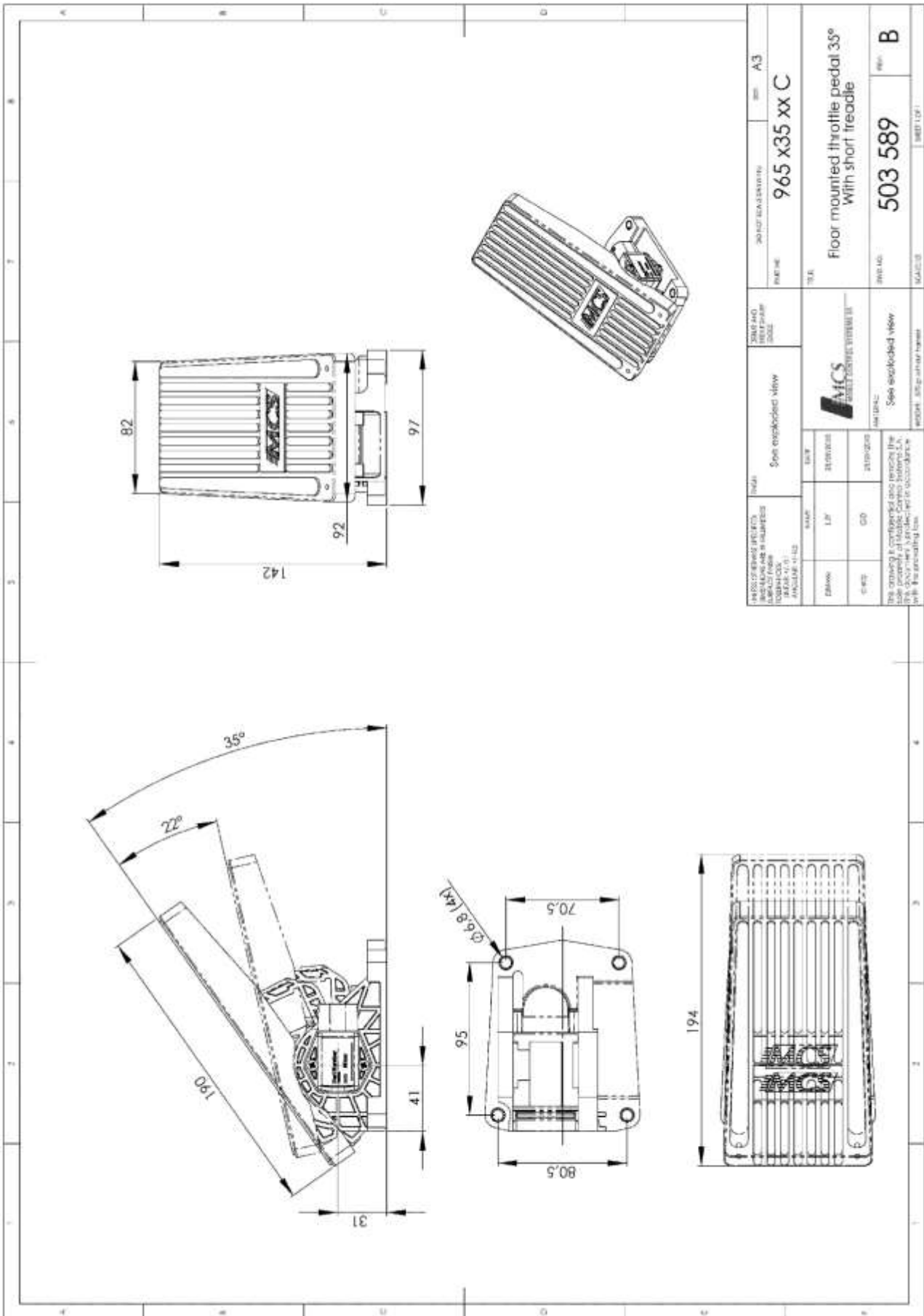
With the short treadle plate

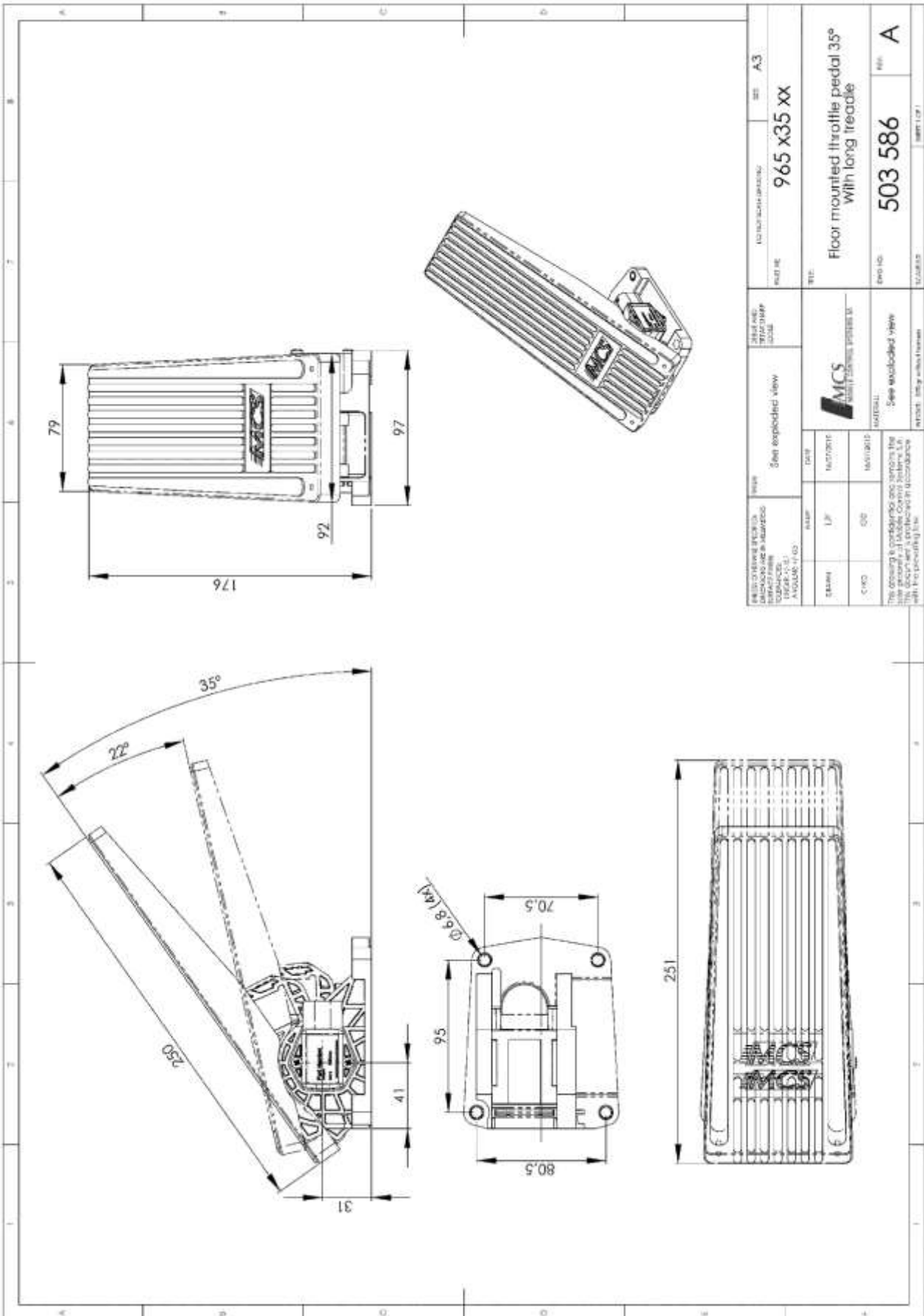
4. Generic drawings:

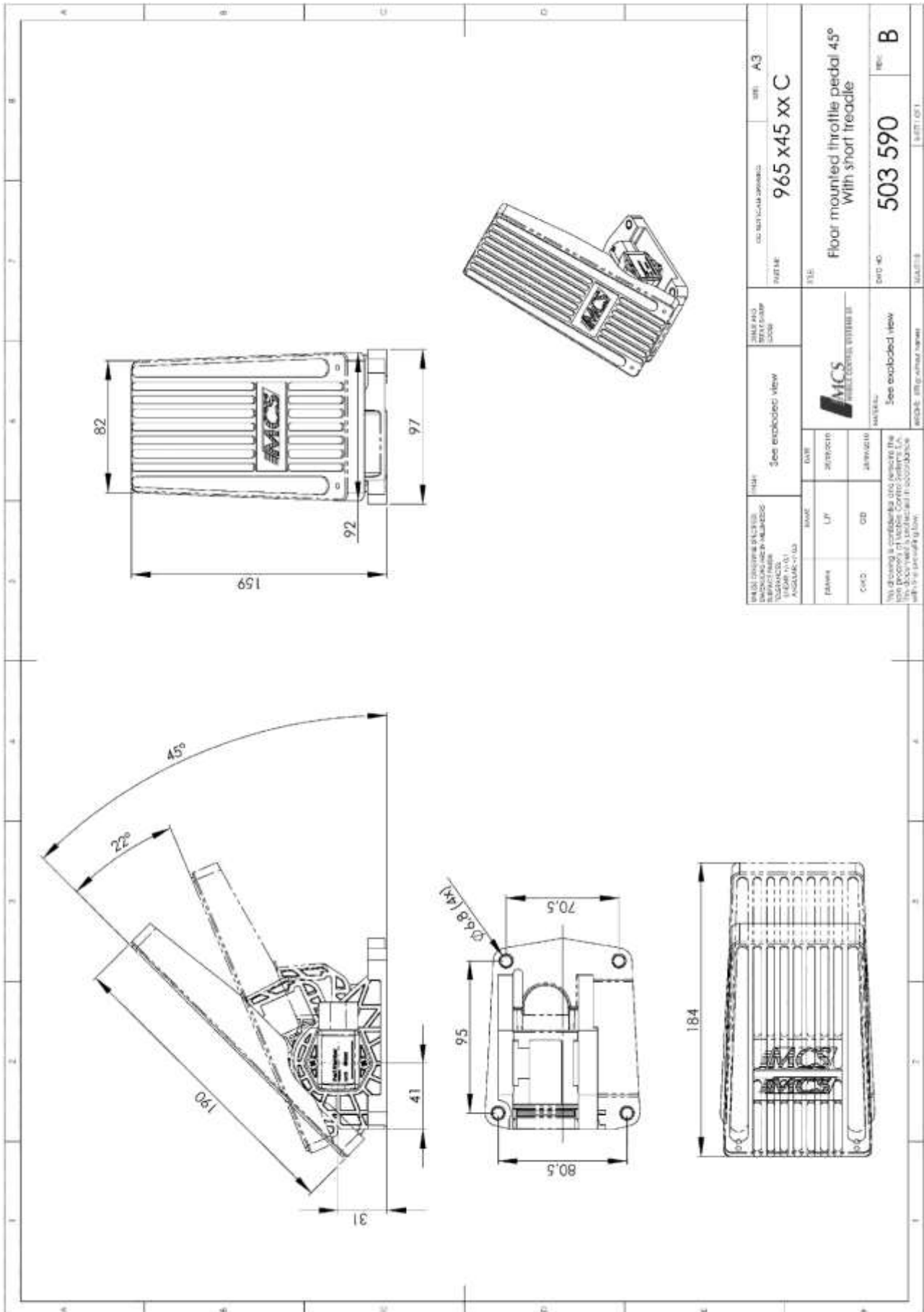




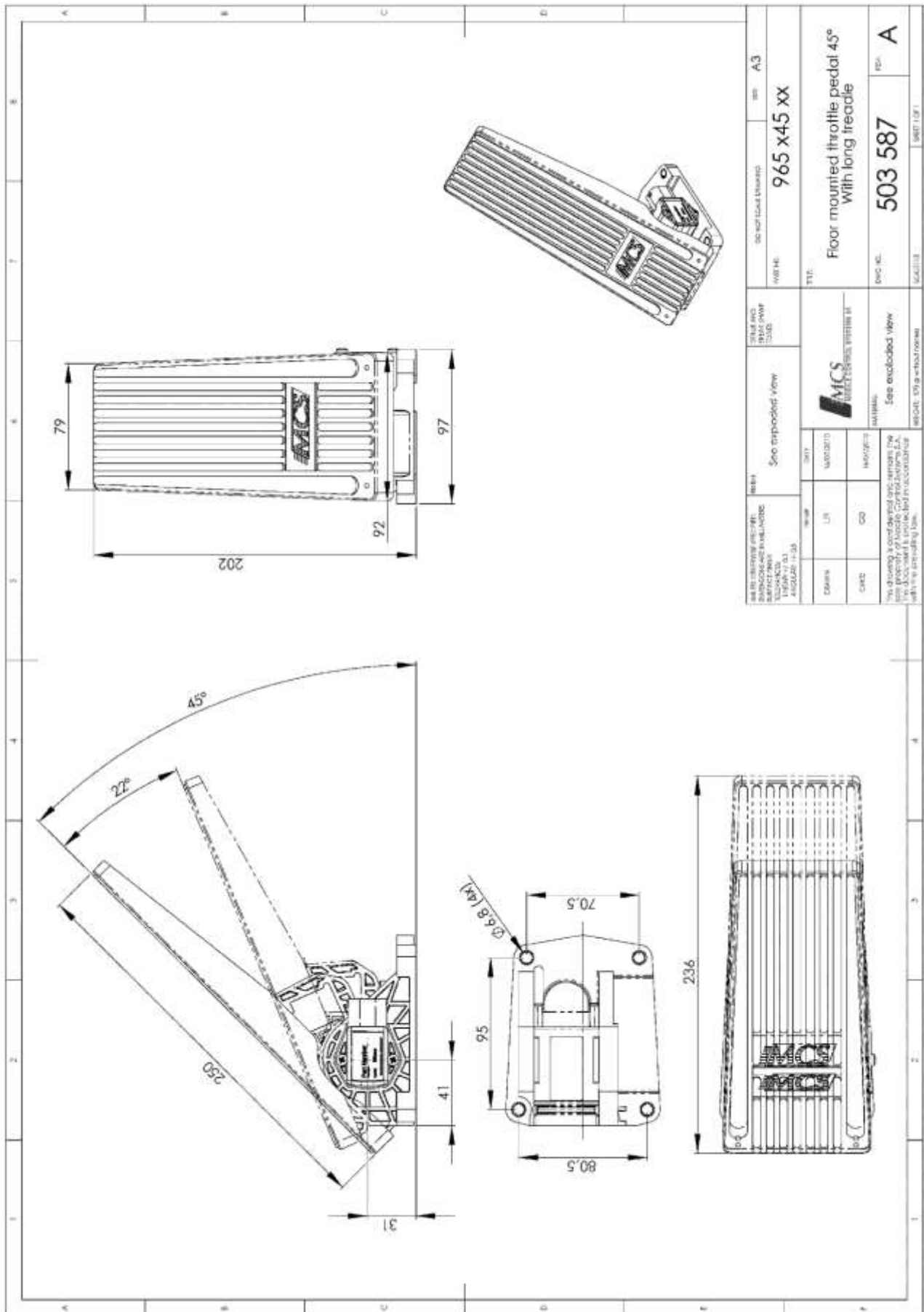
TITLE: 965 x30 xx PART NO: 965 000 series		SEE: A3
TITLE: Floor mounted throttle pedal 30° With long treadle		PART NO: 503 585 REV: A
SEE EXPLODED VIEW: See exploded view		MATERIAL: See exploded view
DRAWING APPROVED: [Signature]		DATE:
DIMENSIONS:	LIT:	METRIC:
CHECK:	DTD:	REVISION:
THE DRAWING IS CONTROLLED AND APPROVED BY THE PROJECT MANAGER. CONTROL SYSTEMS P.A. THE DRAWING IS PROTECTED IN ACCORDANCE WITH THE APPLICABLE LAWS.		



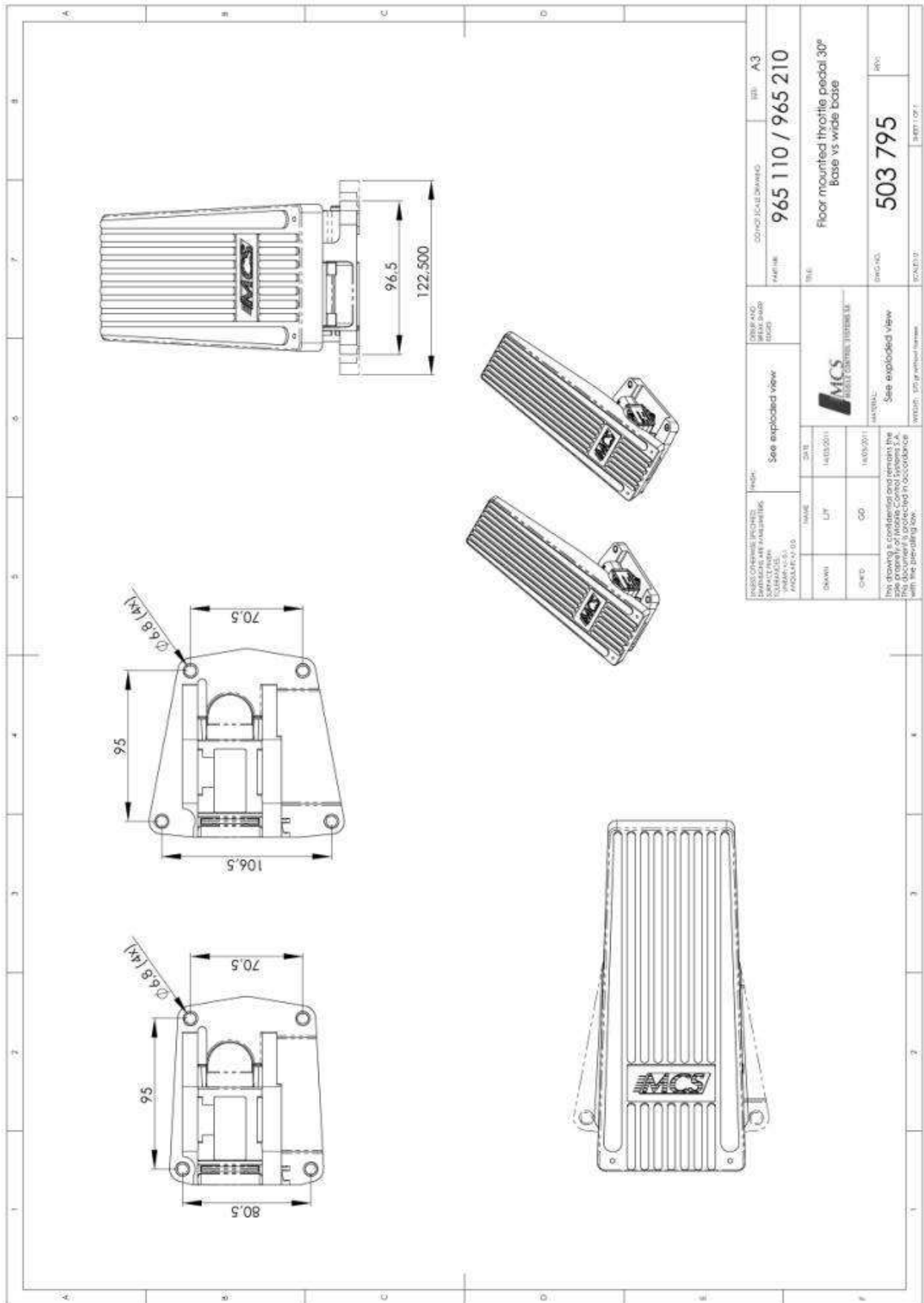




UNO: 965 000 0000 DESIGNED BY: M. A. B. / A.B. / B. / C. / D. / E. / F. / G. / H. / I. / J. / K. / L. / M. / N. / O. / P. / Q. / R. / S. / T. / U. / V. / W. / X. / Y. / Z. / AA. / AB. / AC. / AD. / AE. / AF. / AG. / AH. / AI. / AJ. / AK. / AL. / AM. / AN. / AO. / AP. / AQ. / AR. / AS. / AT. / AU. / AV. / AW. / AX. / AY. / AZ. / BA. / BB. / BC. / BD. / BE. / BF. / BG. / BH. / BI. / BJ. / BK. / BL. / BM. / BN. / BO. / BP. / BQ. / BR. / BS. / BT. / BU. / BV. / BW. / BX. / BY. / BZ. / CA. / CB. / CC. / CD. / CE. / CF. / CG. / CH. / CI. / CJ. / CK. / CL. / CM. / CN. / CO. / CP. / CQ. / CR. / CS. / CT. / CU. / CV. / CW. / CX. / CY. / CZ. / DA. / DB. / DC. / DD. / DE. / DF. / DG. / DH. / DI. / DJ. / DK. / DL. / DM. / DN. / DO. / DP. / DQ. / DR. / DS. / DT. / DU. / DV. / DW. / DX. / DY. / DZ. / EA. / EB. / EC. / ED. / EE. / EF. / EG. / EH. / EI. / EJ. / EK. / EL. / EM. / EN. / EO. / EP. / EQ. / ER. / ES. / ET. / EU. / EV. / EW. / EX. / EY. / EZ. / FA. / FB. / FC. / FD. / FE. / FF. / FG. / FH. / FI. / FJ. / FK. / FL. / FM. / FN. / FO. / FP. / FQ. / FR. / FS. / FT. / FU. / FV. / FW. / FX. / FY. / FZ. / GA. / GB. / GC. / GD. / GE. / GF. / GG. / GH. / GI. / GJ. / GK. / GL. / GM. / GN. / GO. / GP. / GQ. / GR. / GS. / GT. / GU. / GV. / GW. / GX. / GY. / GZ. / HA. / HB. / HC. / HD. / HE. / HF. / HG. / HH. / HI. / HJ. / HK. / HL. / HM. / HN. / HO. / HP. / HQ. / HR. / HS. / HT. / HU. / HV. / HW. / HX. / HY. / HZ. / IA. / IB. / IC. / ID. / IE. / IF. / IG. / IH. / II. / IJ. / IK. / IL. / IM. / IN. / IO. / IP. / IQ. / IR. / IS. / IT. / IU. / IV. / IW. / IX. / IY. / IZ. / JA. / JB. / JC. / JD. / JE. / JF. / JG. / JH. / JI. / JJ. / JK. / JL. / JM. / JN. / JO. / JP. / JQ. / JR. / JS. / JT. / JU. / JV. / JW. / JX. / JY. / JZ. / KA. / KB. / KC. / KD. / KE. / KF. / KG. / KH. / KI. / KJ. / KK. / KL. / KM. / KN. / KO. / KP. / KQ. / KR. / KS. / KT. / KU. / KV. / KW. / KX. / KY. / KZ. / LA. / LB. / LC. / LD. / LE. / LF. / LG. / LH. / LI. / LJ. / LK. / LL. / LM. / LN. / LO. / LP. / LQ. / LR. / LS. / LT. / LU. / LV. / LW. / LX. / LY. / LZ. / MA. / MB. / MC. / MD. / ME. / MF. / MG. / MH. / MI. / MJ. / MK. / ML. / MM. / MN. / MO. / MP. / MQ. / MR. / MS. / MT. / MU. / MV. / MW. / MX. / MY. / MZ. / NA. / NB. / NC. / ND. / NE. / NF. / NG. / NH. / NI. / NJ. / NK. / NL. / NM. / NN. / NO. / NP. / NQ. / NR. / NS. / NT. / NU. / NV. / NW. / NX. / NY. / NZ. / OA. / OB. / OC. / OD. / OE. / OF. / OG. / OH. / OI. / OJ. / OK. / OL. / OM. / ON. / OO. / OP. / OQ. / OR. / OS. / OT. / OU. / OV. / OW. / OX. / OY. / OZ. / PA. / PB. / PC. / PD. / PE. / PF. / PG. / PH. / PI. / PJ. / PK. / PL. / PM. / PN. / PO. / PP. / PQ. / PR. / PS. / PT. / PU. / PV. / PW. / PX. / PY. / PZ. / QA. / QB. / QC. / QD. / QE. / QF. / QG. / QH. / QI. / QJ. / QK. / QL. / QM. / QN. / QO. / QP. / QQ. / QR. / QS. / QT. / QU. / QV. / QW. / QX. / QY. / QZ. / RA. / RB. / RC. / RD. / RE. / RF. / RG. / RH. / RI. / RJ. / RK. / RL. / RM. / RN. / RO. / RP. / RQ. / RR. / RS. / RT. / RU. / RV. / RW. / RX. / RY. / RZ. / SA. / SB. / SC. / SD. / SE. / SF. / SG. / SH. / SI. / SJ. / SK. / SL. / SM. / SN. / SO. / SP. / SQ. / SR. / SS. / ST. / SU. / SV. / SW. / SX. / SY. / SZ. / TA. / TB. / TC. / TD. / TE. / TF. / TG. / TH. / TI. / TJ. / TK. / TL. / TM. / TN. / TO. / TP. / TQ. / TR. / TS. / TT. / TU. / TV. / TW. / TX. / TY. / TZ. / UA. / UB. / UC. / UD. / UE. / UF. / UG. / UH. / UI. / UJ. / UK. / UL. / UM. / UN. / UO. / UP. / UQ. / UR. / US. / UT. / UV. / UW. / UX. / UY. / UZ. / VA. / VB. / VC. / VD. / VE. / VF. / VG. / VH. / VI. / VJ. / VK. / VL. / VM. / VN. / VO. / VP. / VQ. / VR. / VS. / VT. / VU. / VV. / VW. / VX. / VY. / VZ. / WA. / WB. / WC. / WD. / WE. / WF. / WG. / WH. / WI. / WJ. / WK. / WL. / WM. / WN. / WO. / WP. / WQ. / WR. / WS. / WT. / WU. / WV. / WW. / WX. / WY. / WZ. / XA. / XB. / XC. / XD. / XE. / XF. / XG. / XH. / XI. / XJ. / XK. / XL. / XM. / XN. / XO. / XP. / XQ. / XR. / XS. / XT. / XU. / XV. / XW. / XX. / XY. / XZ. / YA. / YB. / YC. / YD. / YE. / YF. / YG. / YH. / YI. / YJ. / YK. / YL. / YM. / YN. / YO. / YP. / YQ. / YR. / YS. / YT. / YU. / YV. / YW. / YX. / YY. / YZ. / ZA. / ZB. / ZC. / ZD. / ZE. / ZF. / ZG. / ZH. / ZI. / ZJ. / ZK. / ZL. / ZM. / ZN. / ZO. / ZP. / ZQ. / ZR. / ZS. / ZT. / ZU. / ZV. / ZW. / ZX. / ZY. / ZZ.		DATE: A.3 PART NO.: 965 000 0000
SEE EXCLUDED VIEW	SEE EXCLUDED VIEW	TITLE: Floor mounted throttle pedal 45° With short treadle PART NO.: 503 590 REV: B
M.C.S. MOBILE CONTROL SYSTEMS S.p.A.	M.C.S. MOBILE CONTROL SYSTEMS S.p.A.	DRAWING NO.: 503 590
MODEL: 965 000 0000	SEE EXCLUDED VIEW	REV: B



REF: 965 000 965 000 965 000 965 000 965 000 965 000		REF: 965 000 965 000 965 000 965 000 965 000 965 000	REF: 965 000 965 000 965 000 965 000 965 000 965 000	REF: 965 000 965 000 965 000 965 000 965 000 965 000
REF: 965 000 965 000 965 000 965 000 965 000 965 000		REF: 965 000 965 000 965 000 965 000 965 000 965 000	REF: 965 000 965 000 965 000 965 000 965 000 965 000	REF: 965 000 965 000 965 000 965 000 965 000 965 000
REF: 965 000 965 000 965 000 965 000 965 000 965 000		REF: 965 000 965 000 965 000 965 000 965 000 965 000	REF: 965 000 965 000 965 000 965 000 965 000 965 000	REF: 965 000 965 000 965 000 965 000 965 000 965 000



5. Typical Applications:



6. Compatible with the following engines:

- | | | |
|------------------|-----------------|-------------------|
| • CATERPILLAR | • JCB | • PERKINS |
| • CUMMINS | • JOHN DEERE | • RENAULT |
| • DACHAI | • KUBOTA | • SCANIA |
| • DEAWOO | • LIEBHERR | • SHANGHAI DIESEL |
| • DAF | • LOVOL | • SISU DIESEL |
| • DETROIT DIESEL | • MAN | • VOLKSWAGEN |
| • DEUTZ | • MERCEDES-BENZ | • VOLVO |
| • HINO | • MTU | • WEICHAI |
| • ISUZU | • NAVISTAR | • YANMAR |
| • IVECO | • NISSAN | • YUCHAI |