

**Agricultural Suspended  
Electronic Throttle Pedal  
967 000 series**



## **1. Mechanical Specifications:**

- Three “built-in” return springs (return force is customized according to customer specification)

Three activation torques are available:

	Act. Torque 1 [Nm]	Act. Torque 2 [Nm]	Act. Torque 3 [Nm]
Idle	4,5	3,8	7
Full (20°)	9,6	6,67	14.4

- Material: PA66 - GF30 / Steel
- Travel angle: max 20°.
- Full throttle is reached when pedal pad stops on the cabin floor
- Sensor and AMP 6 pins connector are IP69K

Storage temperature	-40°C to +95°C
Operating temperature	-40°C to +85°C

- Options:
  - Customized pedal lever
  - Customized mounting plate
  - Connector kit or customized wire harness
- Technical specification sheet and part numbers are available upon request

## **2. Electrical Specifications:**

- Complies with 72/245/EEC
- E1 number 03 5754

All Electronic Throttle Controls are fitted with programmable Hall Effect Sensors.

The signals generated by the Electronic Throttle Controls will allow a smooth and precise engine speed control.

The output values are programmable and hence can be adapted to the customer’s specifications. Electronic Throttle Controls can be connected directly to the engine management system, or engine Electronic Control Module.

For available programmable sensor models, please refer to pages 3 and 4.

## A/ Programmable single analogue sensor with programmable electronic Idle Validation Switch (IVS)

### Analogue channel :

<b>Current consumption</b>	< 7,5mA
<b>Supply (Vs)</b>	Between 5V and 28 V DC
<b>Output signal value</b>	Between 5% and 95% (+/- 1%) of 5V DC
<b>Output current</b>	Max 1mA

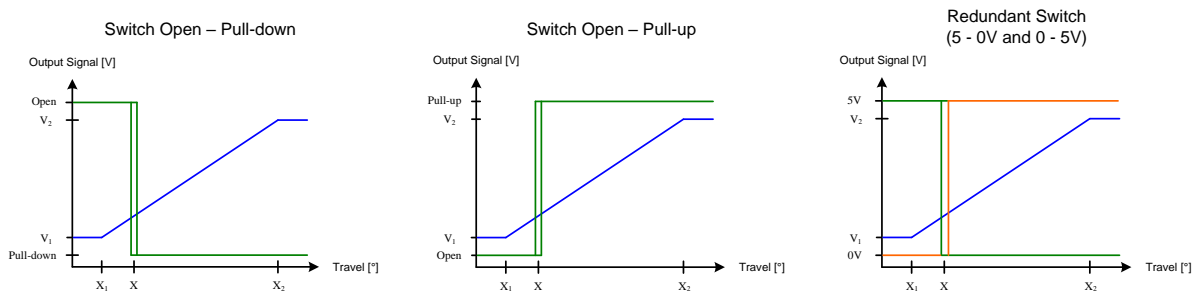
### Switch channel option 1 :

<b>Current consumption</b>	< 10mA
<b>Supply (Vs)</b>	Between 8V and 36V DC
<b>Idle Validation Switch</b>	Configurable (Open collector, Pull-up or Pull-down)
<b>Output current</b>	Max 10mA

### Switch channel option 2 :

<b>Current consumption</b>	< 10mA
<b>Supply (Vs)</b>	Between 8V and 36V DC
<b>Redundant Idle Validation Switch (2 outputs)</b>	Output 1 : High - Low (5 - 0V) Output 2 : Low - High (0 - 5V)
<b>Output current</b>	Max 1mA / output

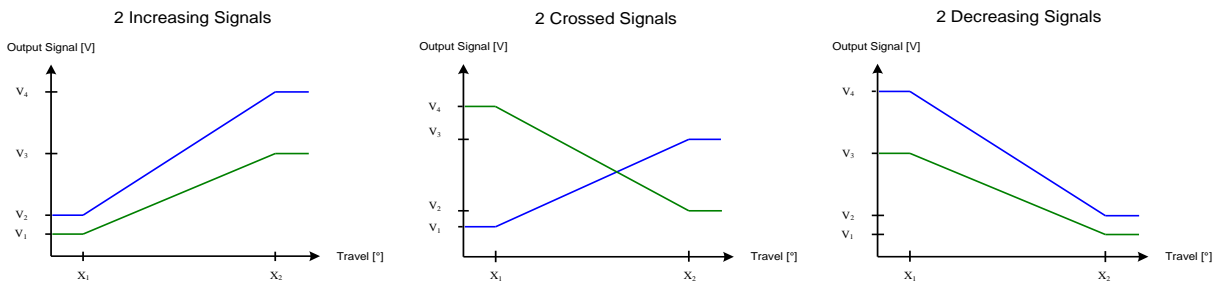
### Examples:



## B/ Programmable dual output analogue sensor

<b>Current consumption</b>	< 8mA / channel
<b>Supply (Vs)</b>	5V DC / channel
<b>Output channel #1</b>	Between 5% and 95% (+/- 1%) of Vs
<b>Output channel #2</b>	Between 5% and 95% (+/- 1%) of Vs
<b>Output current</b>	Max 1mA / channel

### Examples:



## C/ Programmable single or dual output digital sensor (PWM)

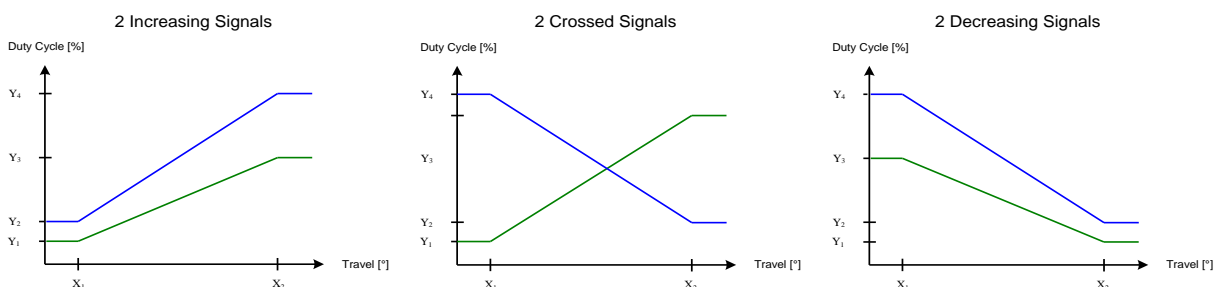
### Digital channel(s):

<b>Current consumption</b>	< 12mA / channel
<b>Supply (Vs)</b>	Between 8 and 36 V DC
<b>Output channel #1</b>	Duty cycle between 5% and 95% (+/- 1%)
<b>Output channel #2</b>	Duty cycle between 5% and 95% (+/- 1%)
<b>Frequency</b>	200Hz to 500Hz +/-15%
<b>Output current</b>	Max 10mA / channel

### Optional switch channel with single digital output:

<b>Current consumption</b>	< 10mA
<b>Supply (Vs)</b>	Between 8V and 36V DC
<b>Idle Validation Switch</b>	Configurable (Open collector, Pull-up or Pull-down)
<b>Output current</b>	Max 10mA

### Examples:



### 3. Options:

#### A/ CAN J1939

##### J1939 Parameters:

- J1939 Messages and signals can be activated according to MCS Throttle default values or customer specifications.
- J1939 Parameters like SA (Source Address) or NAME fields can be set according to MCS Throttle default values or customer specifications.
- Optional messages such as DTC (DMx, FMI, MIL, ...) can be activated upon customer request.

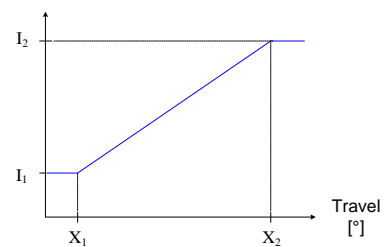
##### Electrical specifications:

Power Supply	+8 .. 32VDC
Current consumption	40mA max.
J1939 Connector	Deutsch #DT06-3S ( J1939/11 )

#### B/ 4-20mA current output signals

Power Supply	+8 .. 32VDC
Current output signal	4 - 20mA

Output Signal [mA]



#### C/ Customized parts available



Pedal with lever arm



Under-the-floor agricultural pedal

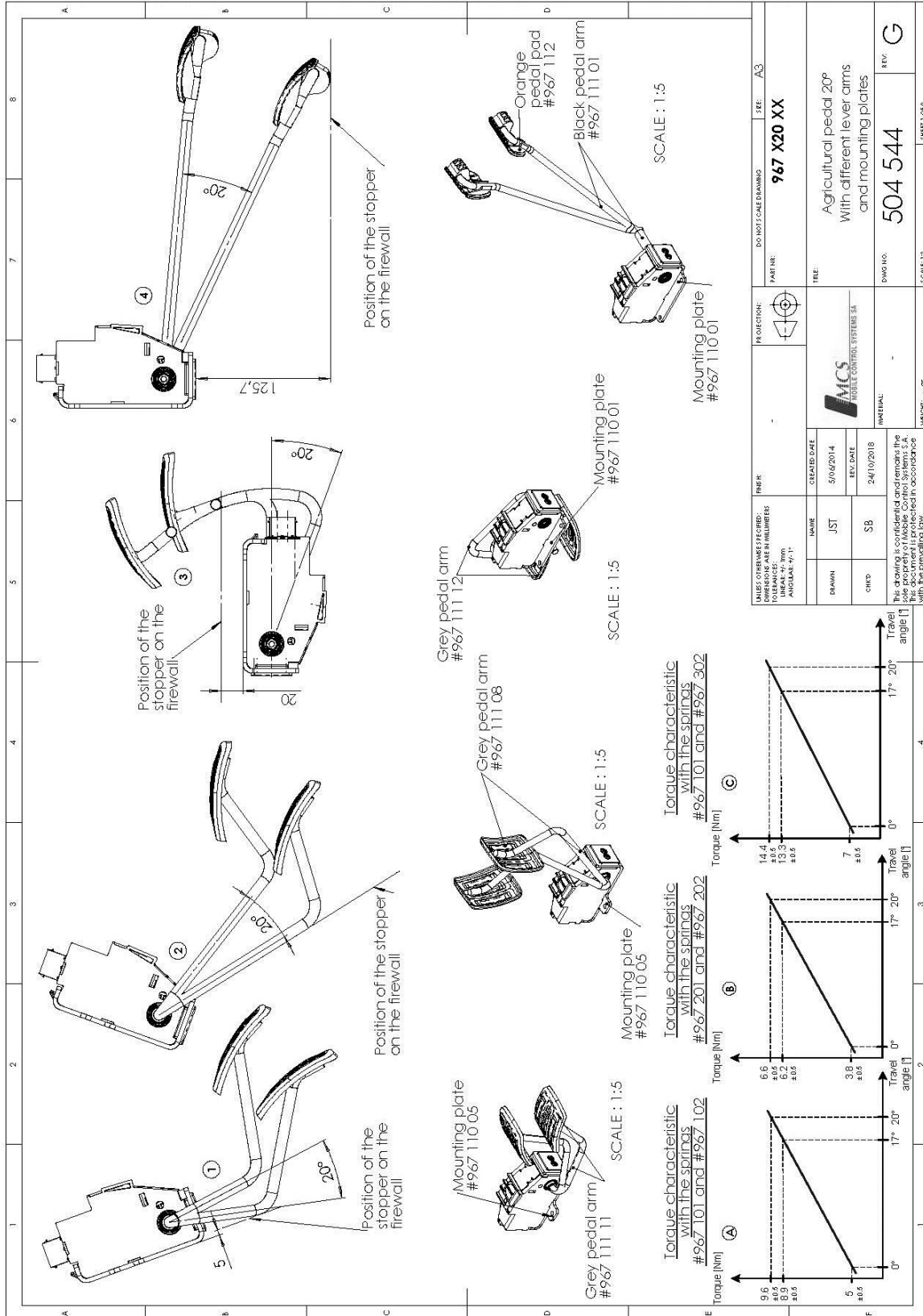


Black arm agricultural pedal



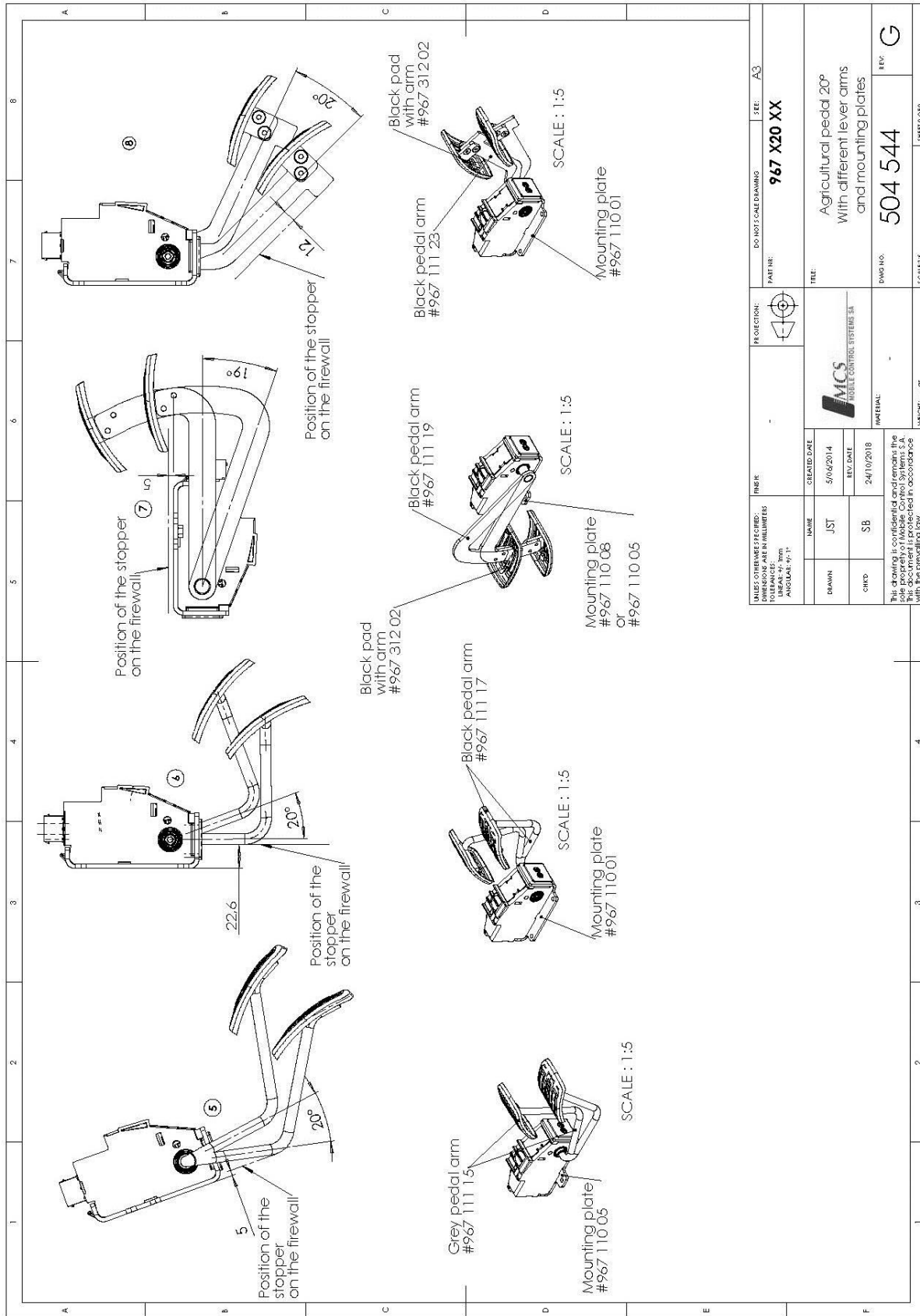
Under-the-floor black arm agricultural pedal

## 4. Drawings:



UNLESS OTHERWISE SPECIFIED: DIMENSIONS ARE IN MILLIMETERS TOLERANCES: LINEAR: ±0.10mm ANGULAR: ±0.1°		PROJECTION: 	DO NOT SCALE DRAWING	SEE: A3
NAME: JST	CREATED DATE: 5/06/2014	PART NO: <b>967 X20 XX</b>		
DRAWN: SB	REV. DATE: 24/10/2018	TITLE: Agricultural pedal 20° with different lever arms and mounting plates		
CHKD: SB		DWG NO: 504 544		REV: G
MATERIAL:		SCALE: 1:5		SHEET 1 OF 2
This drawing is confidential and remains the property of MCS. It is not to be reproduced or used in any way without the prior written consent of MCS. This document is protected in accordance with the prevailing law.				

# Agricultural Suspended Electronic Throttle Pedal 967 000 series



UNLESS OTHERWISE SPECIFIED: DIMENSIONS ARE IN MILLIMETERS TOLERANCES: H6/g6 - 10mm H7/g6 - 10 to 30mm H8/g7 - 30 to 50mm		PROJECTION:	DO NOT SCALE DRAWING	SEE:
FRONT			<b>967 X20 XX</b>	A3
NAME	CREATED DATE	TITLE		
JST	5/06/2014	Agricultural pedal 20° With different lever arms and mounting plates		
SB	24/10/2018	DWG NO. <b>504 544</b> REV: <b>G</b>		
MATERIAL:		SCALE: 1:5		
WEIGHT: . . . g		SHEET 2 OF 2		

This drawing is confidential and remains the property of MCS. It is not to be reproduced, stored in a retrieval system or transmitted in any form or by any means, electronic, mechanical, photocopying, recording, or by any information storage and retrieval system, without the prior written permission of MCS. This document is protected in accordance with the prevailing law.

**5. Typical Applications:**



**6. Compatible with the following engines:**

- CATERPILLAR
- CUMMINS
- DACHAI
- DEAWOO
- DAF
- DETROIT DIESEL
- DEUTZ
- HINO
- ISUZU
- IVECO
- JCB
- JOHN DEERE
- KUBOTA
- LIEBHERR
- LOVOL
- MAN
- MERCEDES-BENZ
- MTU
- NAVISTAR
- NISSAN
- PERKINS
- RENAULT
- SCANIA
- SHANGHAI DIESEL
- SISU DIESEL
- VOLKSWAGEN
- VOLVO
- WEICHAI
- YANMAR
- YUCHAI